



Product Service

CERTIFICATE

No. Z1 16 10 18718 01057

Holder of Certificate: **TDC Power Products Co., Ltd.**
 RM C13 5F, NO.210 Sec.3 Ta-Tung RD., Shi Chih DIST.
 22103 New Taipei City
 TAIWAN



Certification Mark:



Product: **Power supplies
 (Switching Power Supply)**

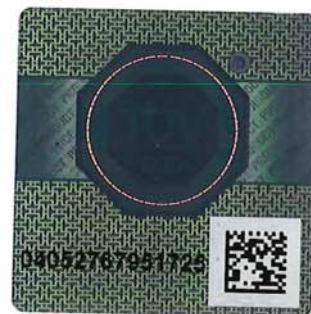
The product was tested on a voluntary basis and complies with the essential requirements. The certification mark shown above can be affixed on the product. It is not permitted to alter the certification mark in any way. In addition the certification holder must not transfer the certificate to third parties. See also notes overleaf.

Test report no.: 611101600401

Valid until: 2021-10-04

Date, 2016-10-05

Bill Lin
 (Bill Lin)



Page 1 of 3



Product Service

CERTIFICATE

No. Z1 16 10 18718 01057

Model(s):

SA7x-vvv-iiiiz, SA5B-vvv-iiiiz
("x" can be B or D to denote different plug type;
"vvv" can be 035-300 to denote output voltage;
"iii" can be 0010-1500 to denote output current;
"y" can be F or S to denote different enclosure type;
"z" can be A, B, C or D to denote different size
of the enclosure and output wiring)

Parameters:

Rated input voltage:	100-240 Vac
Rated input current:	0.25 A
Rated frequency:	50/60 Hz
Rated outputs:	See attachment
Protection class:	II
IP class:	IP20

**Tested
according to:**

EN 61347-1:2008/A2:2013
EN 61347-2-13:2014
EN 62493:2015

**Production
Facility(ies):**

25211, 41453

Page 2 of 3



The following models will be covered in this certificate:

Model #	Rated output		Max. output power (W)
	(V)	(mA)	
SA7x-vvv-iiiiz	3.5-5.0	10-1500	7.5
	5.1-7.0	10-1470	
	7.1-10.0	10-1056	
	10.1-14.0	10-0740	
	14.1-20.0	10-0530	
	20.1-30.0	10-0370	
SA5B-vvv-iiiiz	3.5-5.0	10-1000	5.0
	5.1-7.0	10-980	
	7.1-10.0	10-704	
	10.1-14.0	10-495	
	14.1-20.0	10-354	
	20.1-30.0	10-248	

Models designation:

- For plug type:
"x" can be B = British plug, D = Changeable British plug.
- For output rating:
"vvv" can be 035 - 300 denotes output voltage 3.5 - 30.0V with steps 0.1V.
"iii" can be 0010 -1500 denotes output current 10 - 1500mA with steps 1mA.
- For enclosure type:
"y" can be F = Front insert enclosure type:
 a. Front insert enclosure type with Changeable plug only for 7.5 W models SA7D-vvv-iiiFz.
 b. Front insert enclosure type with fixed plug, the plug type "x" can't into D.
 "y" can be S = Side insert enclosure type:
 Side insert enclosure type with fixed plug only for 7.5 W models SA7B-vvv-iiiSA and 5 W models SA5B-vvv-iiiSA and SA5B-vvv-SB, the plug type "x" can't into D.
- For enclosure and output wiring:
 "z" can be A = normal size enclosure and DC cable.
 "z" can be B = normal size enclosure and USB port. (Only for output 5 W used)
 "z" can be C = small size enclosure and DC cable. (Only for output 7.5 W used)
 "z" can be D = small size enclosure and USB port. (Only for output 7.5 W used)

Date, 2016-10-05

Bill L.